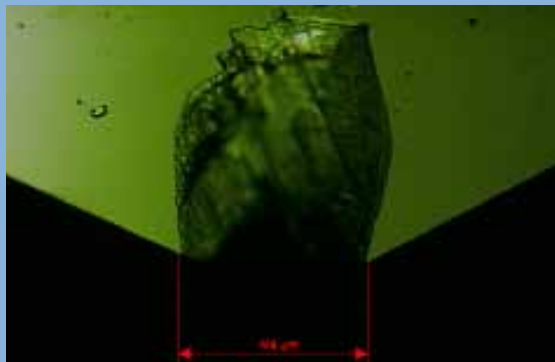
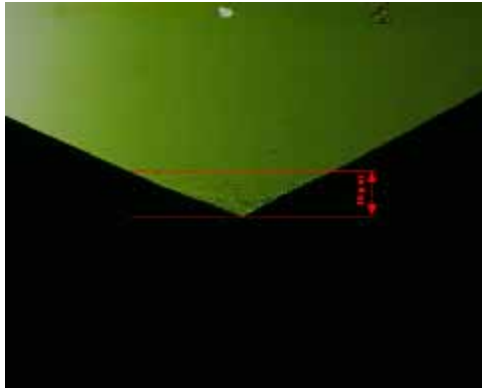


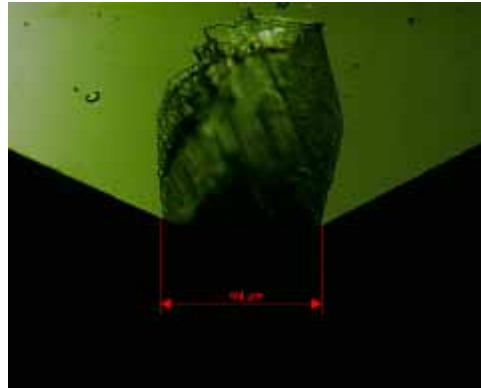
Possible damages of a diamond



Wear pattern of a diamond



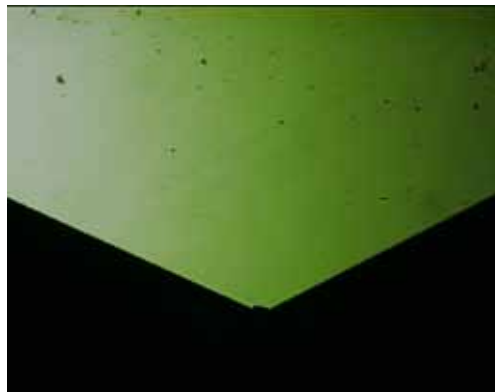
Normal wear off



„Violence break“ by foreign matter in copper or improper handling



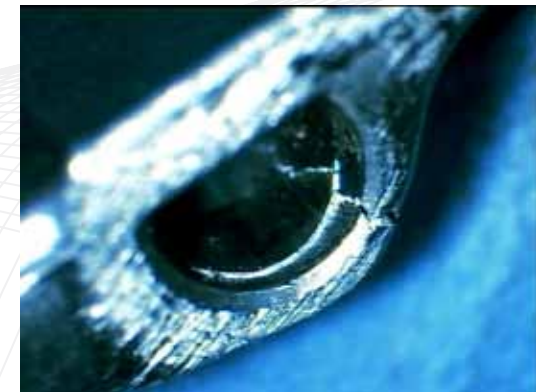
„Third cutting edge“ – break in crystal structure



Tip break by e.g. impurities of the copper



Chipping cutting edges caused by wrong diamond maintenance e.g. cleaning by brush, compressed air or kneading rubber



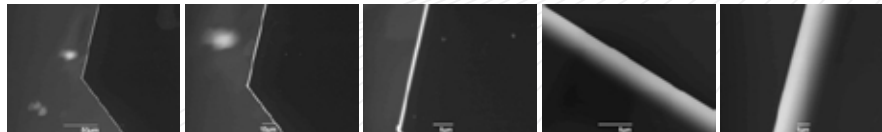
Broken diamond holder caused by titled-in of the holder on axis of the engraving head

Damage of a Diamond

Condition of the diamond when shipped

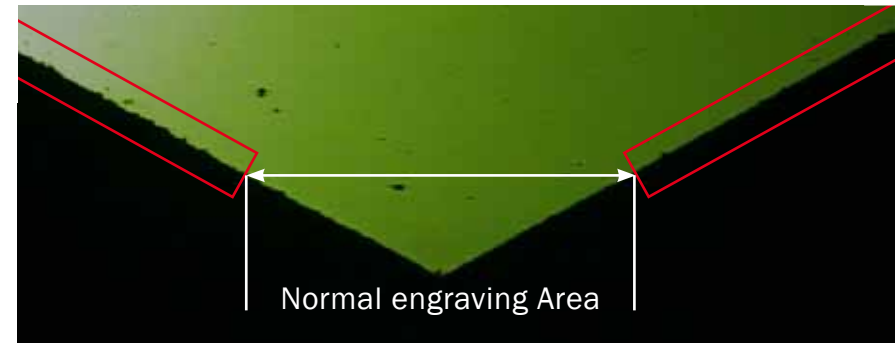


The diamonds are checked for cutting edge sharpness at INDIMANT with an image enlargement of 400 times, then sealed with a label before being shipped to the customer.



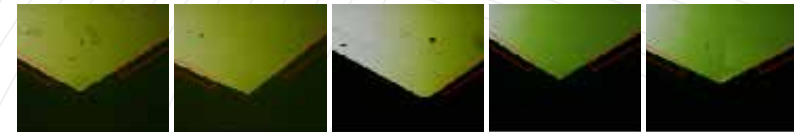
Examination with a REM microscope with an enlargement of up to 10,000 didn't show any damages at the time of delivery to the customer.

Condition of the diamond after usage



Damages outside of engraving area indicate improper handling. Possible causes are:

- ◆ Cleaning of diamond with a brush
- ◆ Touching the diamond with fingers
- ◆ Touching the burr cutter during mounting of engraving system
- ◆ Cleaning with compressed air
- ◆ Cleaning with kneading rubber



Some examples for damages outside the engraving area