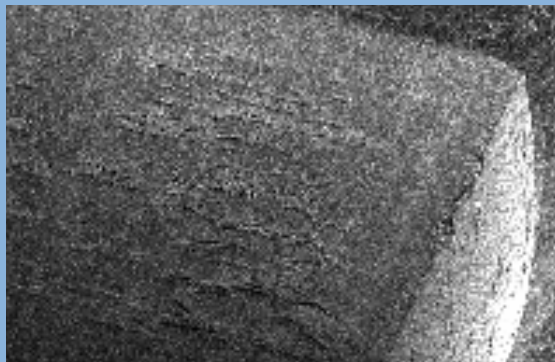
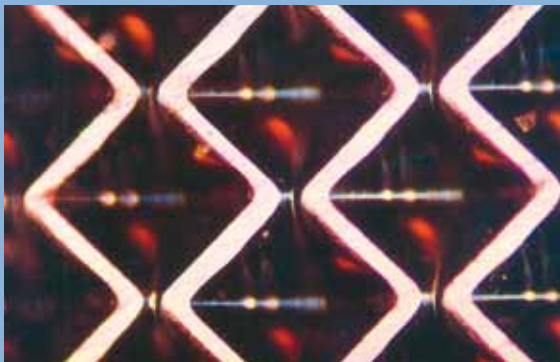
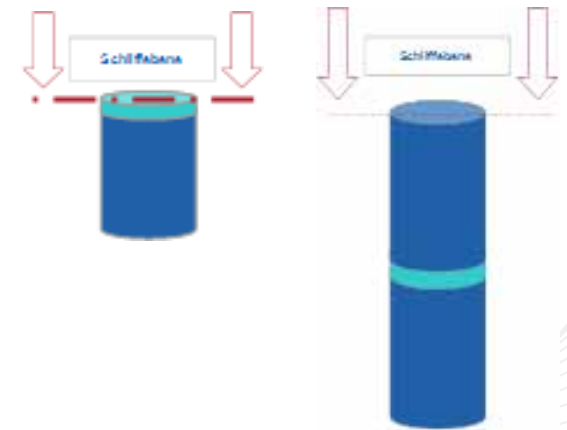


# The Stylus on the test bench

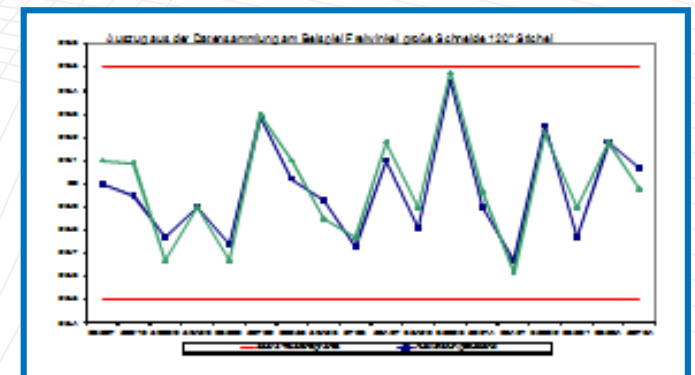


## Checking the glue

- ◆ Take the daily used quantity of glue
- ◆ Check temperature (storage / thermosetting)
- ◆ Chemical attack
- ◆ Cleaning the diamond
- ◆ Cleaning the diamond holder
- ◆ Checking movements of the diamond after thermosetting of glue
- ◆ Tests with new glue (with change of glue afterwards)

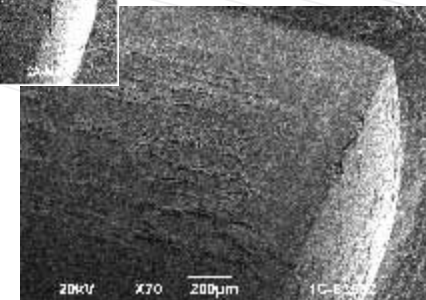
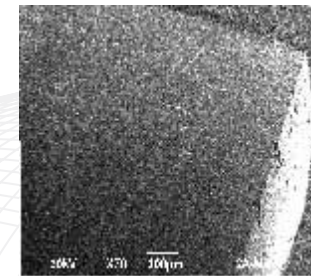
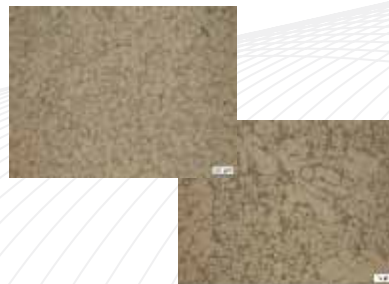


Extract of data acquisition ex  
clearance angle big cutting edge, 120° stylus.



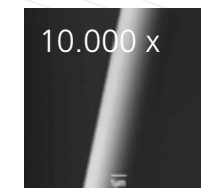
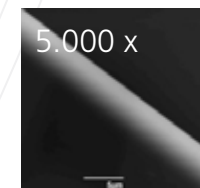
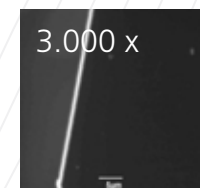
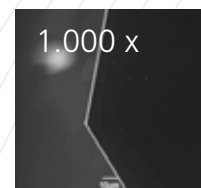
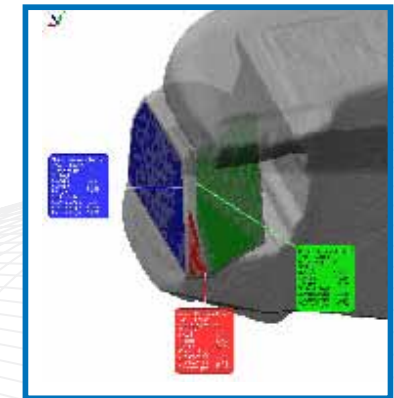
# Research of Holder

- ◆ Check production instructions
- ◆ Regularly check punching tools
- ◆ Analyses of joining
- ◆ Analyses of drill surface
- ◆ Check outer outline with optimizing of foundry mould.



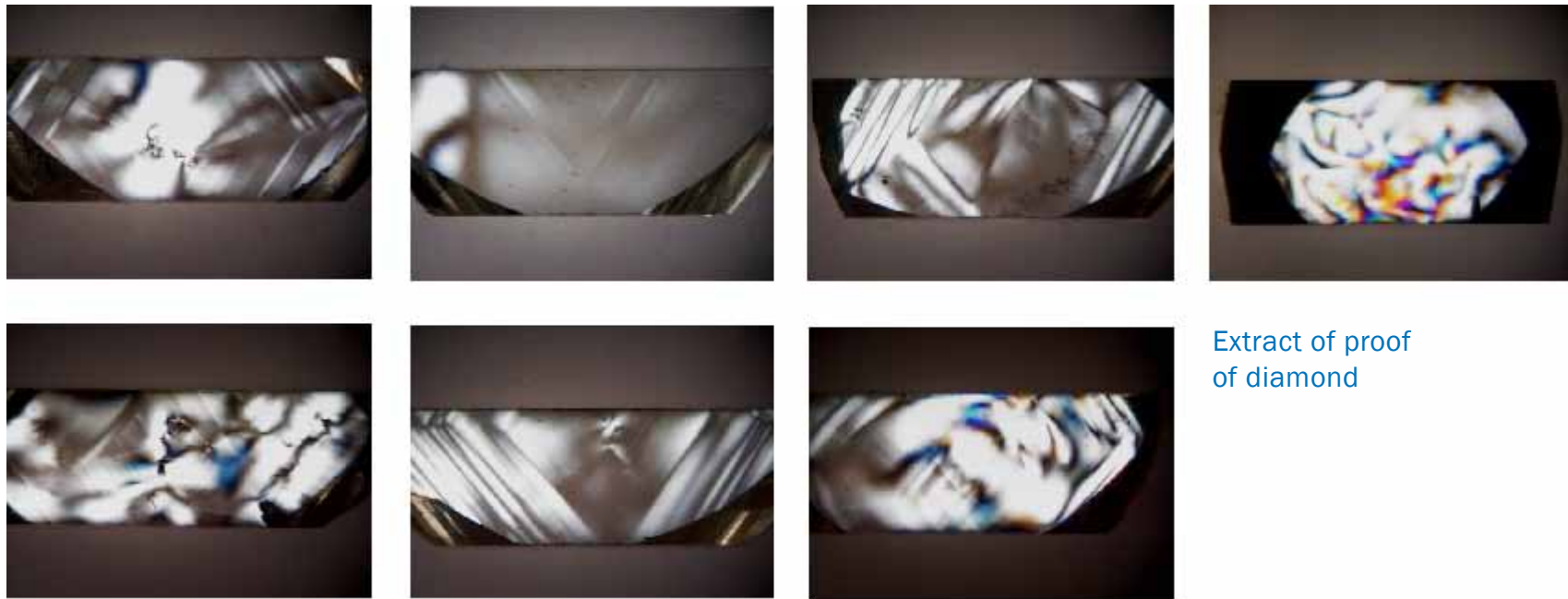
## Check of diamond

- ◆ Check geometry
- ◆ Check positioning
- ◆ Analyses of cutting edge under scanning electron microscope
- ◆ Polarization
- ◆ Installation of data base
- ◆ Creating reference standard with the help of computer tomography



# Visualization of possible stress conditions of diamonds

To realize imperfections of diamonds



Extract of proof  
of diamond